



District 6

AGENDA

- **Introductions**
- **Role of Project Advisory Team**
- **Study Area & Background**
- **Study Objectives**
- **Study Overview**
- **Project Scope**
- **Review Existing Data**
- **Other Activities Affecting Corridor**
- **Stakeholder Coordination**
- **Next Steps**
- **Questions**



INTRODUCTIONS

- Shereen Yee-Fong – FDOT Project Manager
- Ken Jeffries – FDOT Planning Manager
- Leana Miranda – FDOT P.E. Trainee
- Jose Muñoz, P.E. – Consultant Project Manager
- Lorin Brissett, P.E. – Deputy Consultant Project Manager
- Alfred Lurigados, P.E. – Consultant Stakeholder Liaison
- Charesse Chester – Consultant Public Involvement Officer



ROLE OF PROJECT ADVISORY TEAM




- Provide guidance and serve as resource to study team
- Ensure stakeholder Interests are fully considered in Study
- Sounding board for recommendations



STUDY AREA & BACKGROUND



- Important Limited Access Facility Connecting Miami International Airport and Miami Beach
- Carries average 130,000 Vehicles Per Day – Total both directions
- Provides Access to Several High Growth Neighborhoods
- Continued Growth Expected to increase demand exacerbating access issues.  5

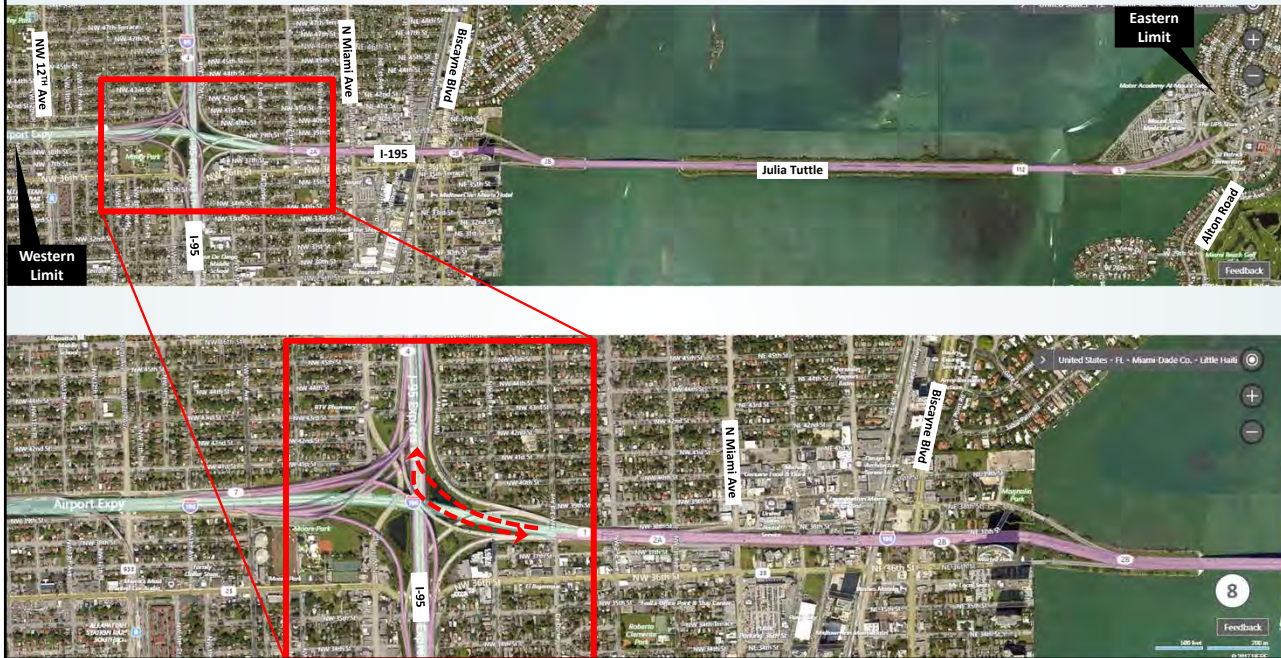
STUDY OBJECTIVES

- Evaluate Existing Conditions and Deficiencies
- Identify Needs
- Develop and Evaluate Improvement Concepts

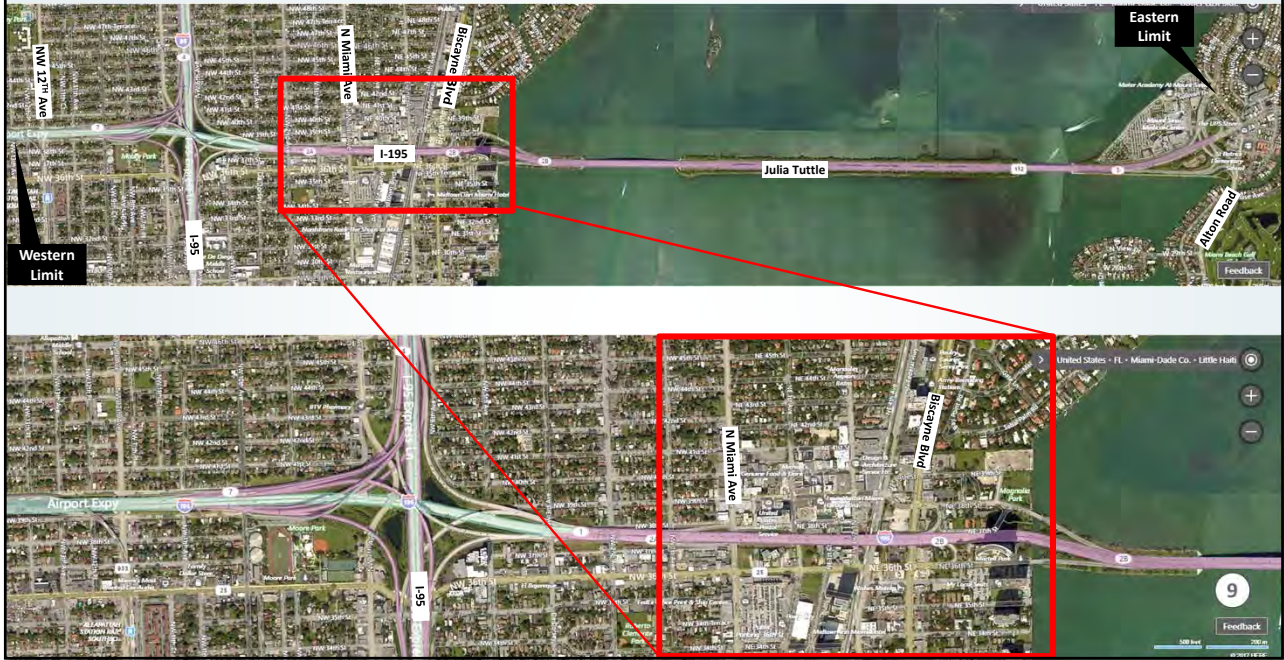
STUDY OVERVIEW



STUDY OVERVIEW (Direct Connection to 95 Express Lanes)



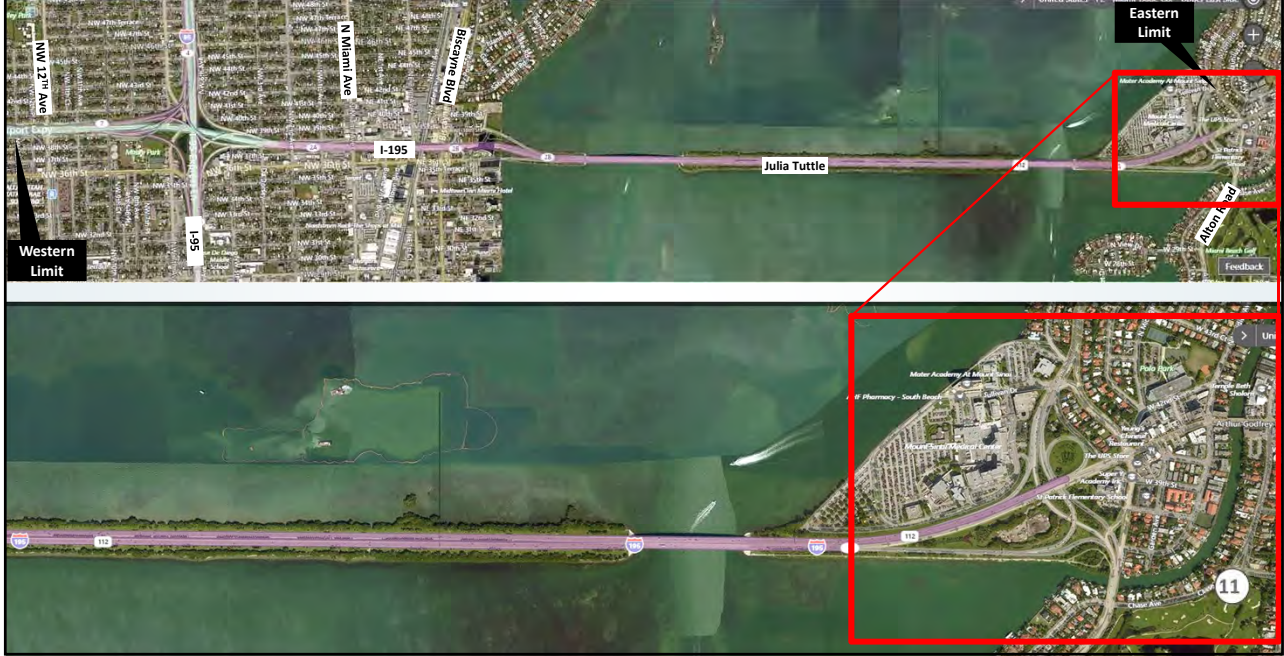
STUDY OVERVIEW (Improve Design District Interchange Access)



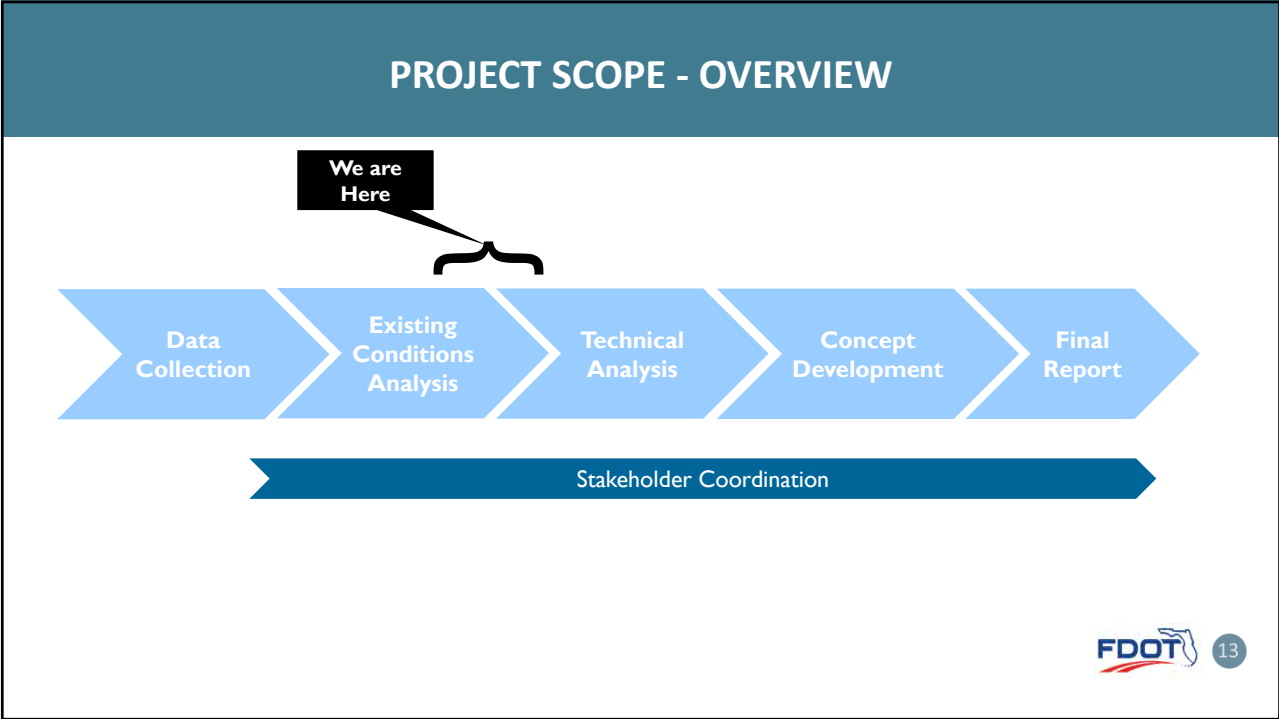
STUDY OVERVIEW (Improve Bicycle Access on Causeway)



STUDY OVERVIEW (Improve Alton Road Interchange Access)



PROJECT SCOPE



EXISTING CONDITIONS OVERVIEW

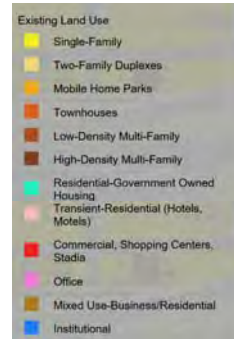
 14

EXISTING LAND USE – CITY OF MIAMI

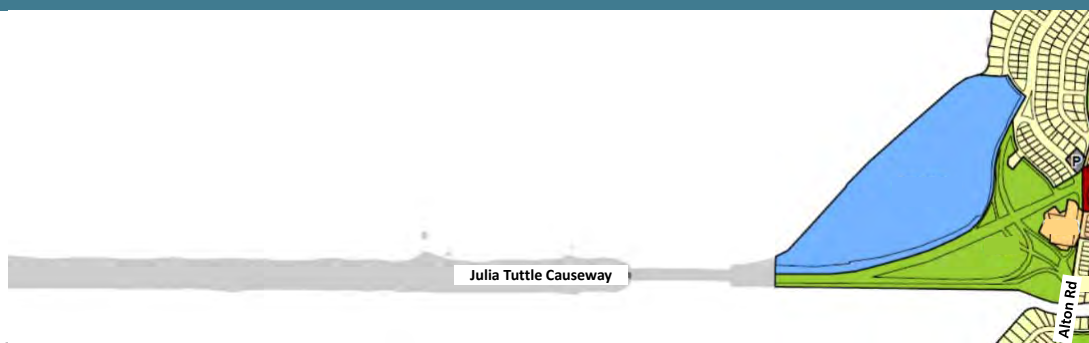


Source: City of Miami Planning and Zoning

- West end, mainly residential, smattering of commercial
- Middle section, heavy commercial east of N Miami
- High-Density Condominiums east of Biscayne Boulevard



EXISTING LAND USE – CITY OF MIAMI-BEACH



- Main Uses surrounding interchange
 - Public Health Facility, Mt. Sinai Hospital
 - Open Space
 - Single Family Residential



EXISTING INTELLIGENT TRANSPORTATION SYSTEMS (ITS) INFRASTRUCTURE



- Seven (7) CCTV cameras*
- Two (2) Dynamic Message Signs (DMS) on I-195 *
- Two (2) DMS on Arterial
- Seventeen (17) Detectors
- Four (4) FDOT Wireless Access Points (WAPs)

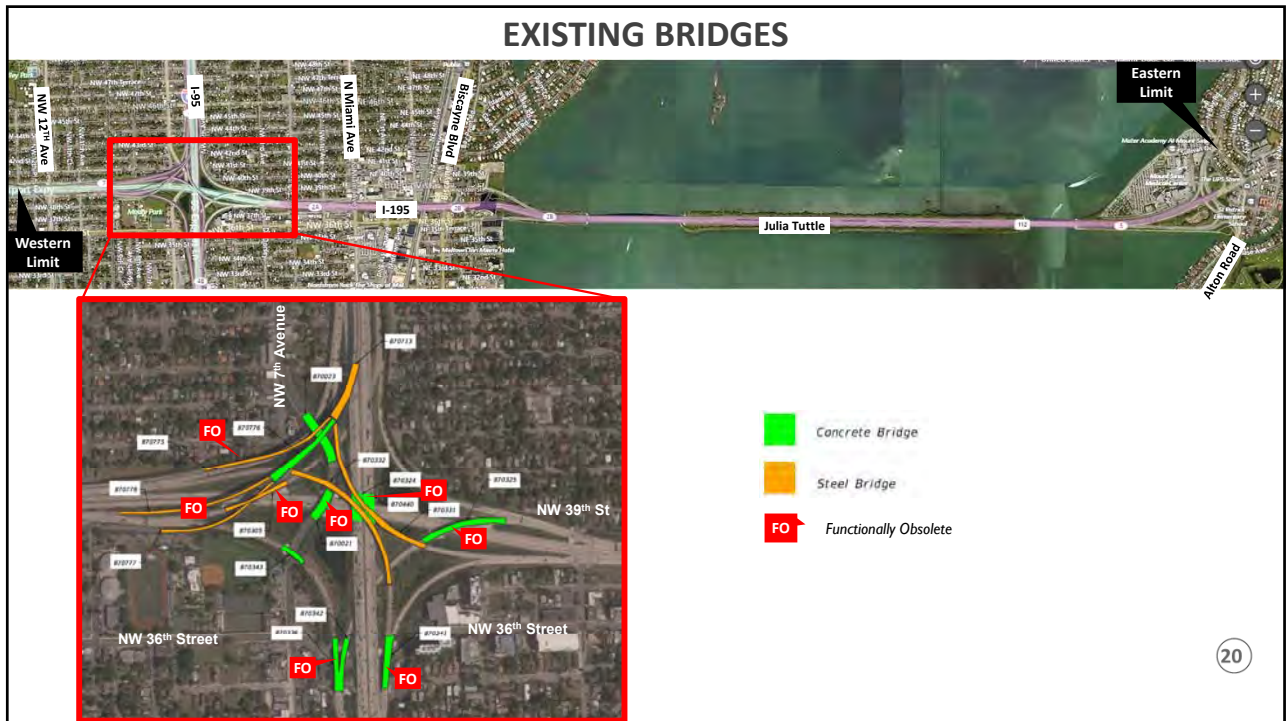
***To be upgraded under upcoming ITS Device Replacement Project**

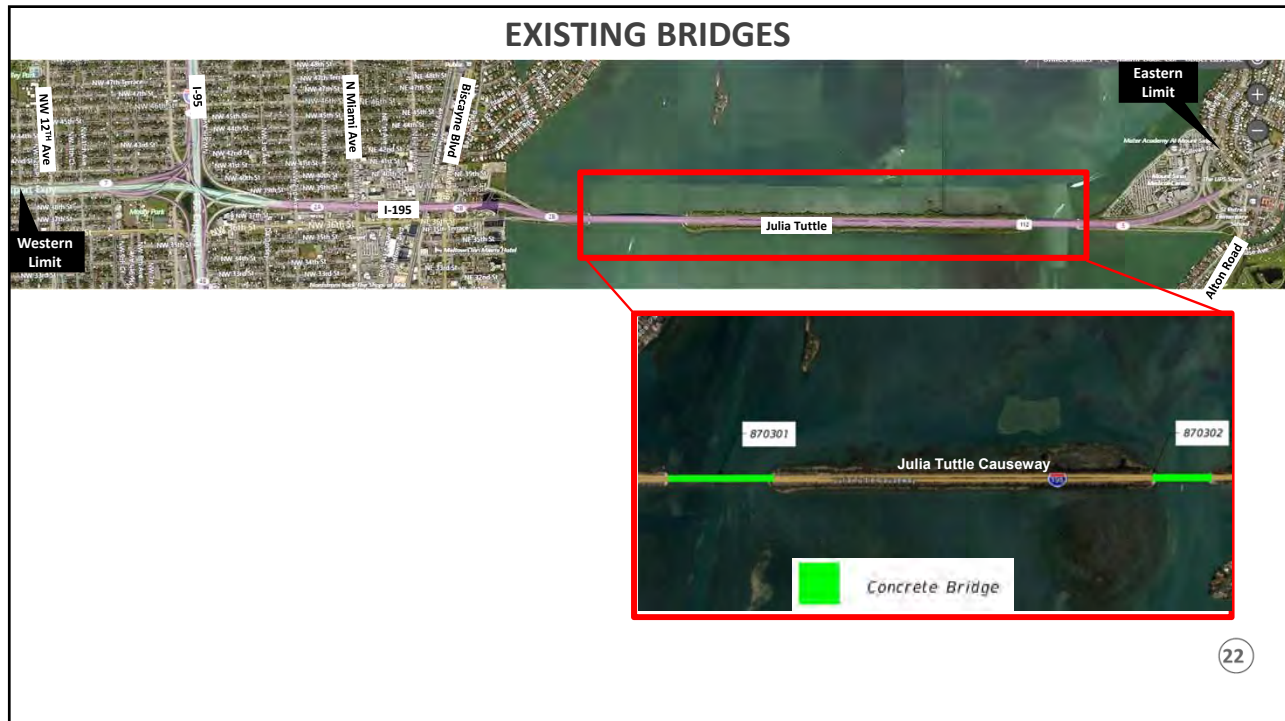
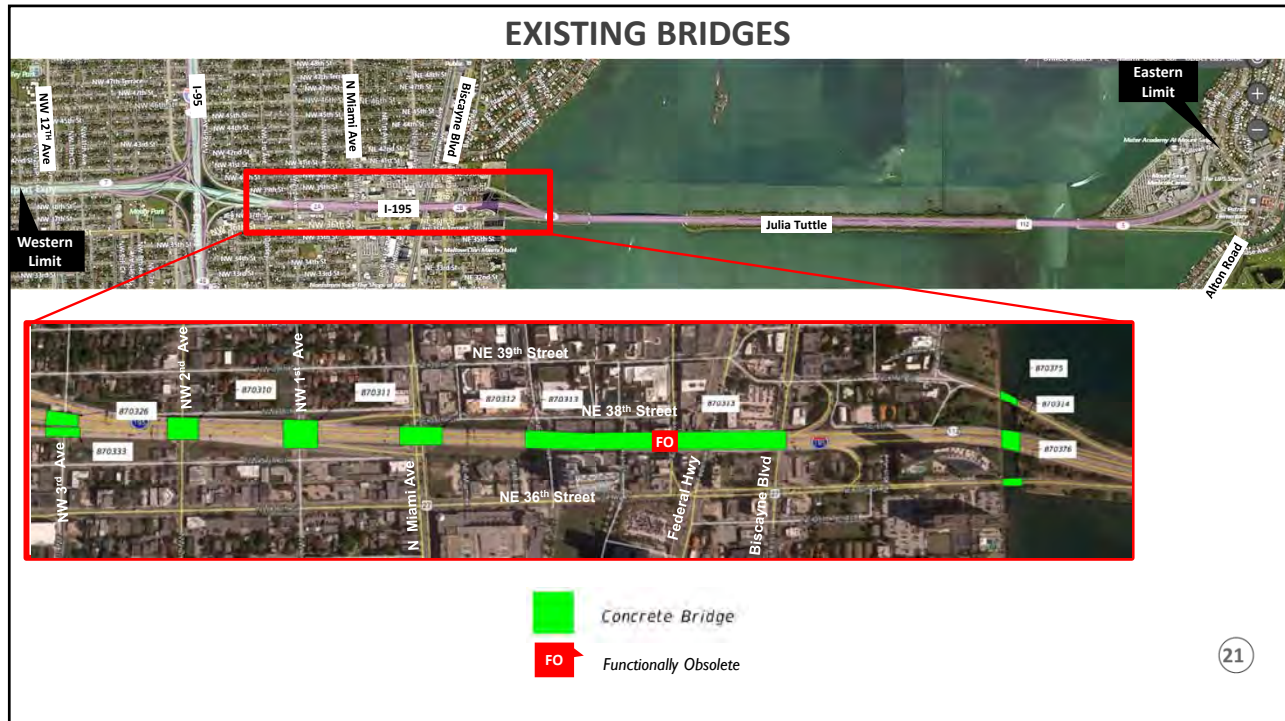


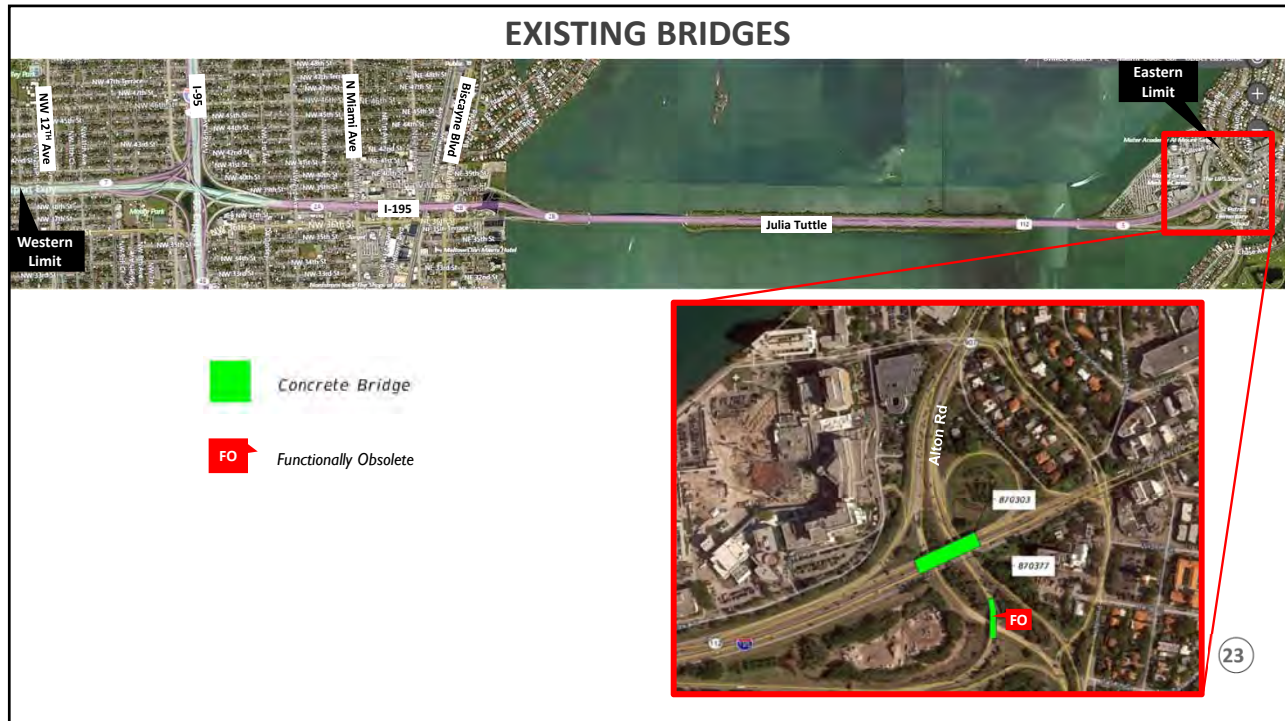
EXISTING BRIDGES

- Thirty two (32) Bridges in Study area
- Steel Bridges (7), Concrete Bridges (25)
- Twelve (12) are Functionally Obsolete (i.e., does not meet current design standards)









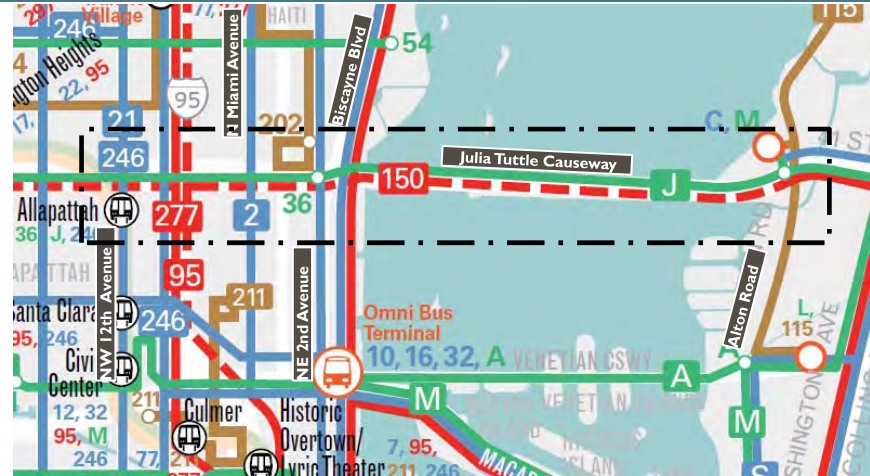
EXISTING TRANSIT SERVICE

- **15 Transit Routes within study area**
 - **Miami-Dade Transit (12)**
 - **City of Miami Trolley (2)**
 - **Miami Beach Trolley (1)**

Maintaining Agency	Transit Service	Via	From	To
Miami Dade Transit	MDT 246 Night Owl	NW 12 Avenue	Government Center	163rd Street Mall Government Center (Downtown)
Miami Dade Transit	MDT 21	NW 12 Avenue	Northside Metro Station	Downtown
Miami Dade Transit	MDT 95	I-95	Aventura Mall	Downtown
Miami Dade Transit	MDT 2	N Miami Avenue	167 Street	Aventura
Miami Dade Transit	MDT 9	NE 2nd Avenue	Adrienne Arshdt Metro Station	N Miami Beach Metro Station
Miami Dade Transit	MDT 10	NE 2nd Avenue	Miami Design Center	Biscayne Shopping Plaza
Miami Dade Transit	MDT 202 Little Haiti Connection	NE 2nd Avenue	Downtown Government Center	Aventura
Miami Dade Transit	MDT 3	Biscayne Boulevard	Downtown Government Center	Aventura
Miami Dade Transit	MDT 93 Biscayne Max	Biscayne Boulevard	Downtown Government Center	Aventura
Miami Dade Transit	MDT 150 Miami Beach Airport Express	I-195/Julia Tuttle Causeway	Miami International Airport	South Beach
Miami Dade Transit	MDT 110 Route J	I-195/Julia Tuttle Causeway	Miami International Airport	City of Miami Beach
Miami Dade Transit	MDT 115 Mid-North Beach Connection	Alton Road	Lincoln Road	Mt. Sinai Medical Center
City of Miami	Biscayne Route	NW 39 Street / N Miami Avenue	Financial District	Design District
City of Miami	Wynwood Route	NW 36 Street	Adrienne Arshdt Metro Station	Design District
City of Miami Beach	Middle Beach Loop	Alton Road	Mt. Sinai Hospital	Dade Boulevard

EXISTING TRANSIT SERVICE – CITY OF MIAMI

- Miami Dade Transit
- 12 Routes
- Study segments Impacted
 - I-195 / SR 112
 - NW 12th Ave
 - N Miami Ave
 - Biscayne Blvd



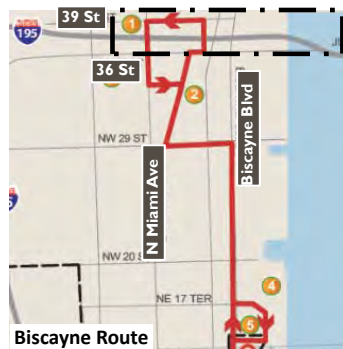
Source: Miami-Dade Transit Route Map

 Study Area



EXISTING TRANSIT SERVICE – CITY OF MIAMI (TROLLEY)

- City of Miami Trolley
- 2 Routes
- Study Segments Impacted
 - NE 39 Street
 - N Miami Avenue
 - NW / NE 36 Street



Biscayne Route



Wynwood Route

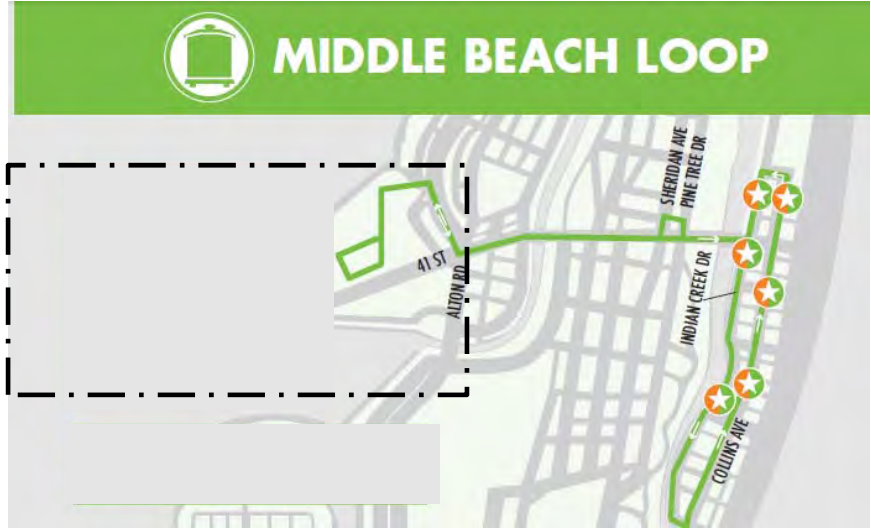
 Study Area



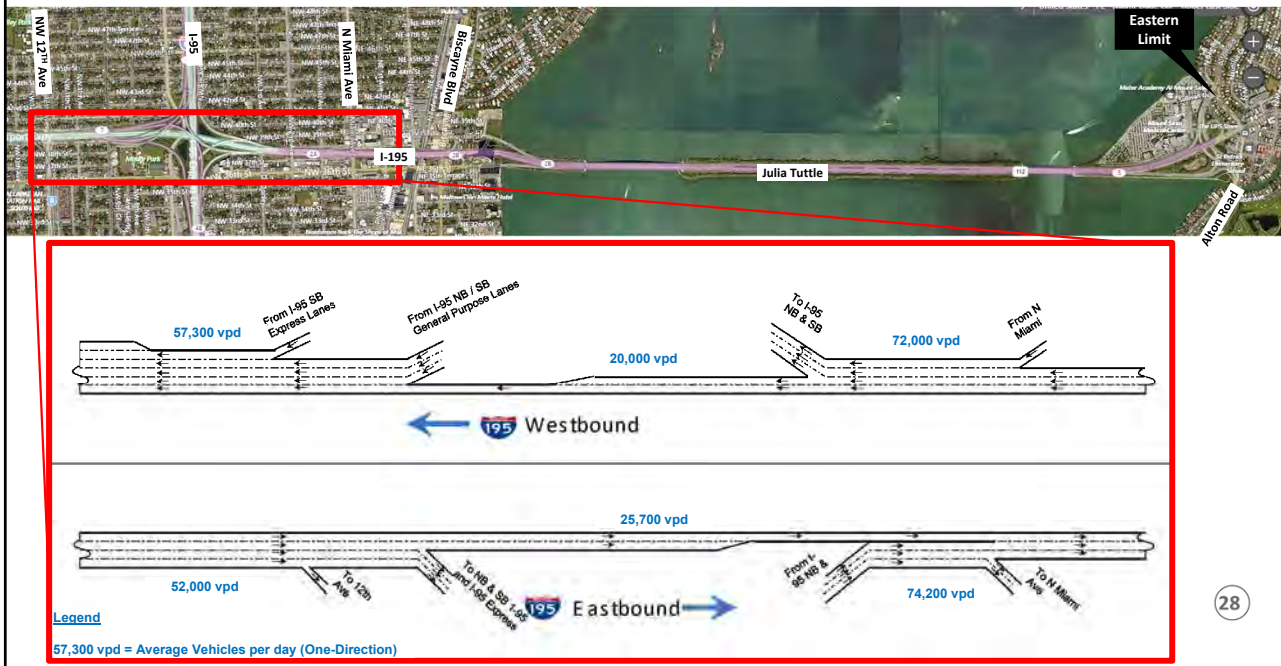
EXISTING TRANSIT SERVICE – CITY OF MIAMI BEACH

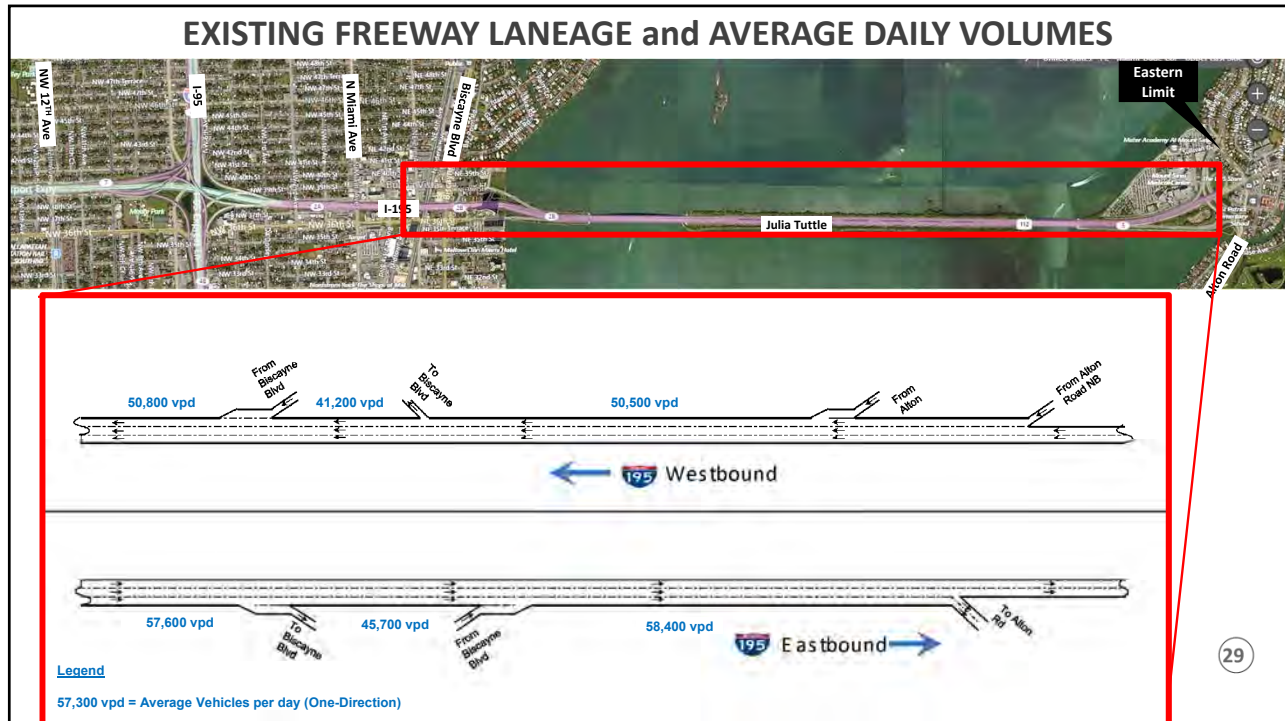
- City of Miami Beach Trolley
- 1 Route

 Study Area



EXISTING FREEWAY LANEAGE and AVERAGE DAILY VOLUMES





TRAFFIC CONDITIONS - Roadway Level of Service (LOS)

- Tells us how well roads are functioning
- LOS 'A' is best LOS 'F' is Worst
- FDOT Adopts minimum standard of LOS 'D' for Urban Areas
- LOS Color Scale

	A to C
	D
	E
	F

30

EXISTING TRAFFIC CONDITIONS – AM PEAK (PRELIMINARY)



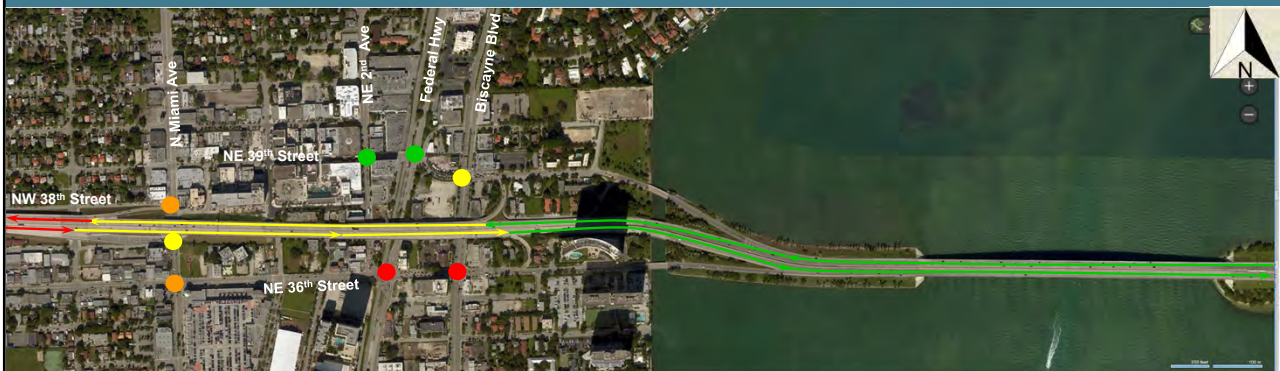
Level of Service (LOS) Scale

- Intersection
- Interstate segment
- A to C
- D
- E
- F

- Some critical freeway segments operating below LOS 'D'
- Couple intersections including ramp terminal below LOS 'D'



EXISTING TRAFFIC CONDITIONS – AM PEAK (PRELIMINARY)



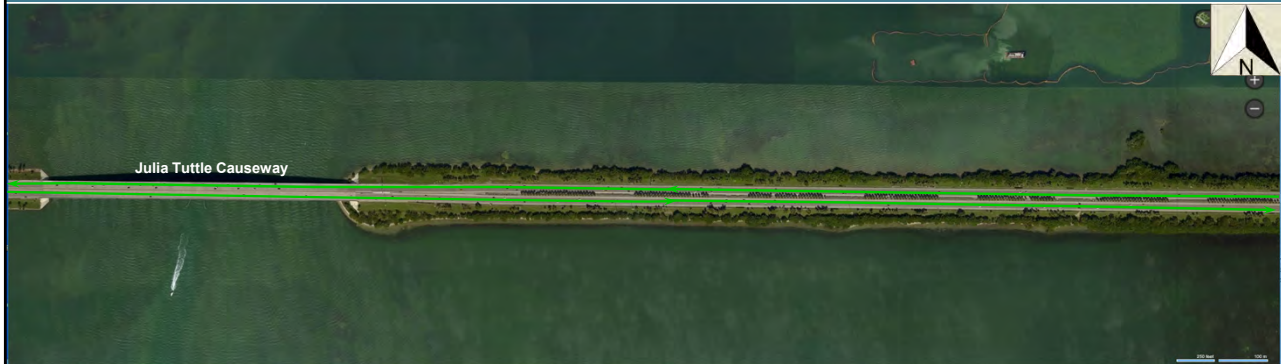
Level of Service (LOS) Scale

- Intersection
- Interstate segment
- A to C
- D
- E
- F

- Freeway segments operating at LOS 'D' or better
- Number of intersections operating below LOS 'D'



EXISTING TRAFFIC CONDITIONS – AM PEAK (PRELIMINARY)



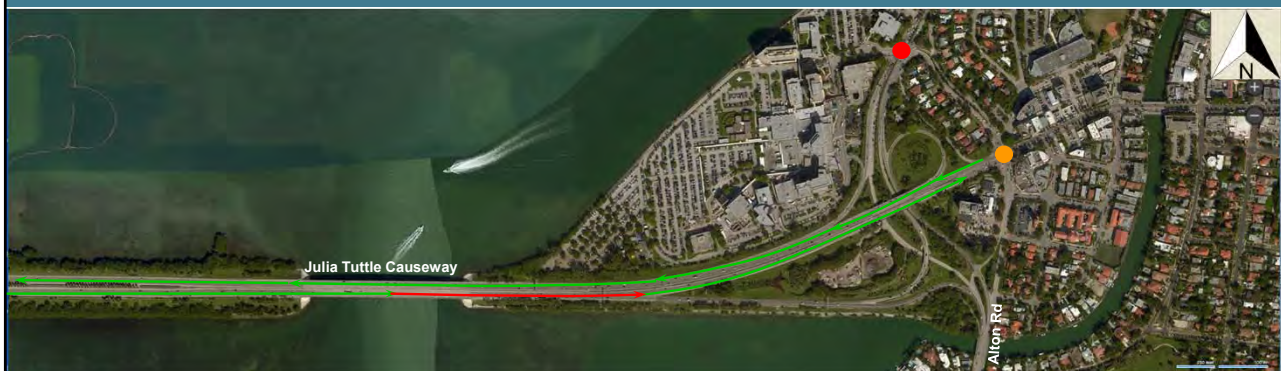
Level of Service (LOS) Scale

- Intersection
- Interstate segment
- A to C
- D
- E
- F

- Segments operating better than LOS 'D'



EXISTING TRAFFIC CONDITIONS – AM PEAK (PRELIMINARY)



Level of Service (LOS) Scale

- Intersection
- Interstate segment
- A to C
- D
- E
- F

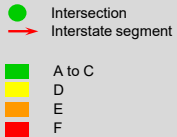
- Eastbound diverge area before off ramp operating below LOS 'D'
- Major intersections operating below LOS 'D'



EXISTING TRAFFIC CONDITIONS – PM PEAK (PRELIMINARY)



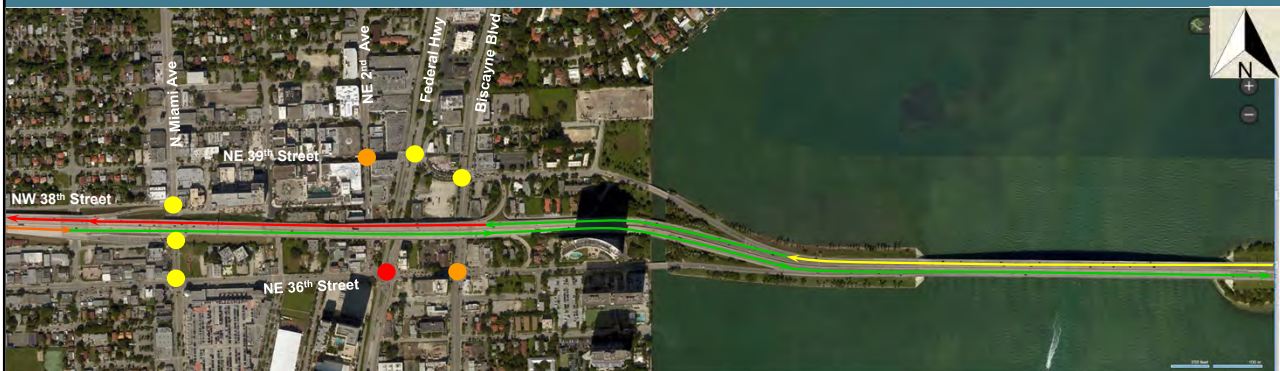
Level of Service (LOS) Scale



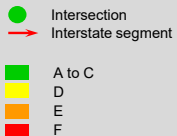
- Some freeway segments operating below LOS 'D'
- Ramp terminal intersections operating at LOS 'D'



EXISTING TRAFFIC CONDITIONS – PM PEAK (PRELIMINARY)

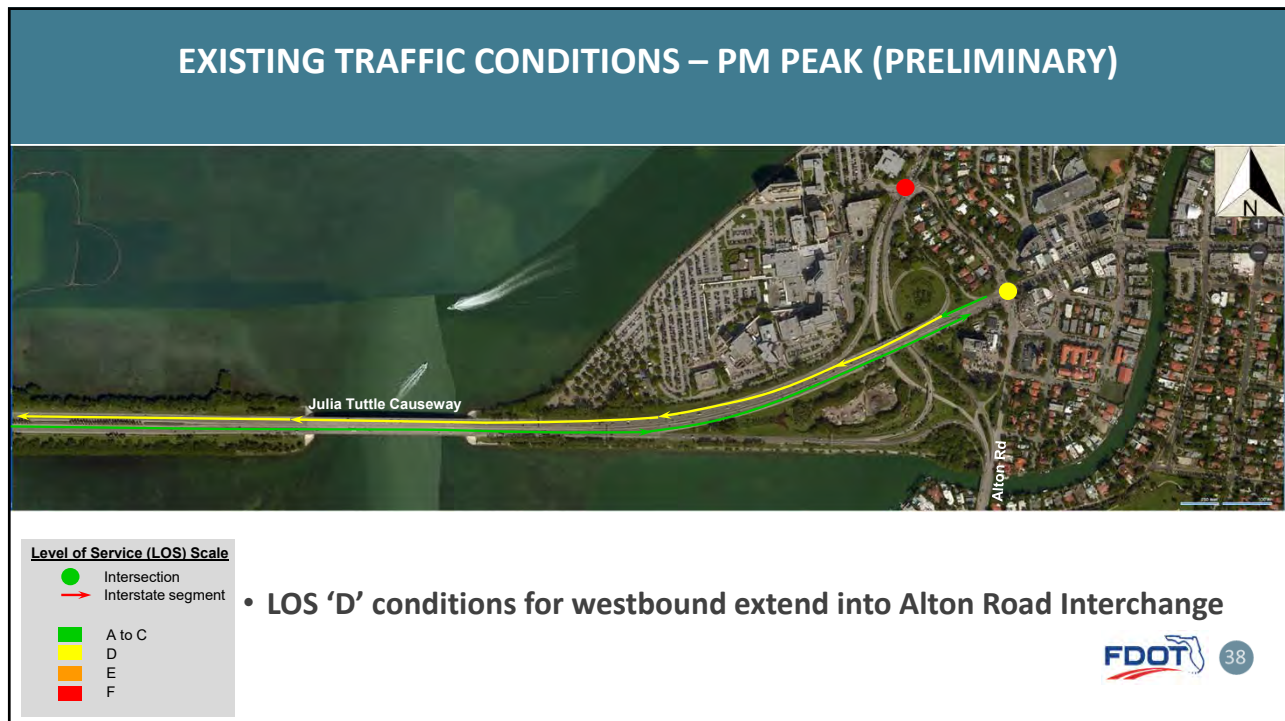


Level of Service (LOS) Scale



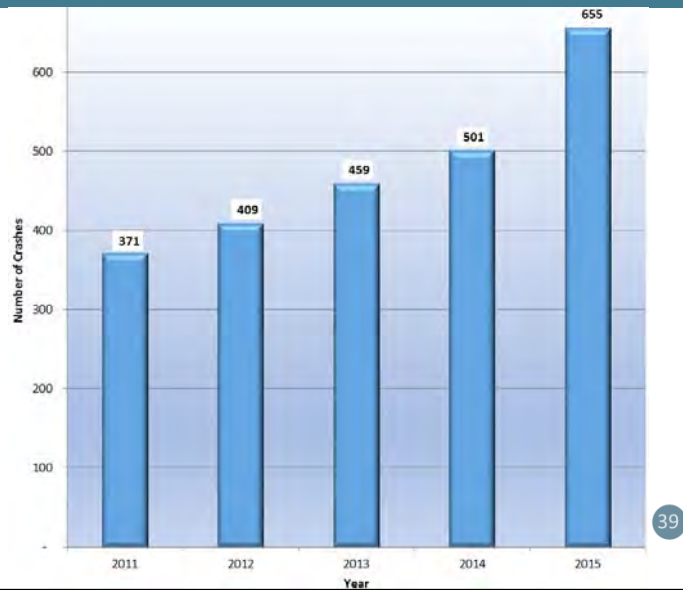
- Poor operations from downstream weave causing problems up to On-Ramp from Biscayne Blvd on I-195 westbound
- Major intersections on surface streets operating below LOS 'D'





SAFETY ISSUES – OVERALL SUMMARY

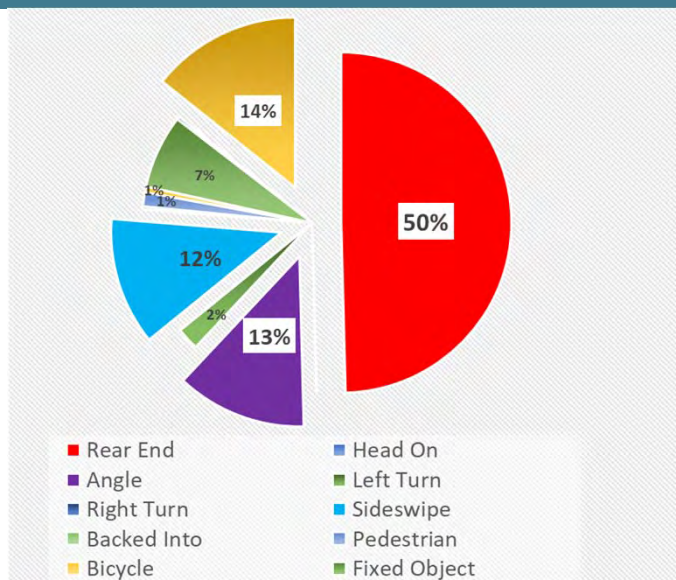
- Five year Study period (2011 to 2015)
- Total of 2,395 crashes
- Crashes increasing every year – approximately 10% per year from 2011 to 2014 then 30% in 2015



39

SAFETY ISSUES – LEADING CRASH TYPES

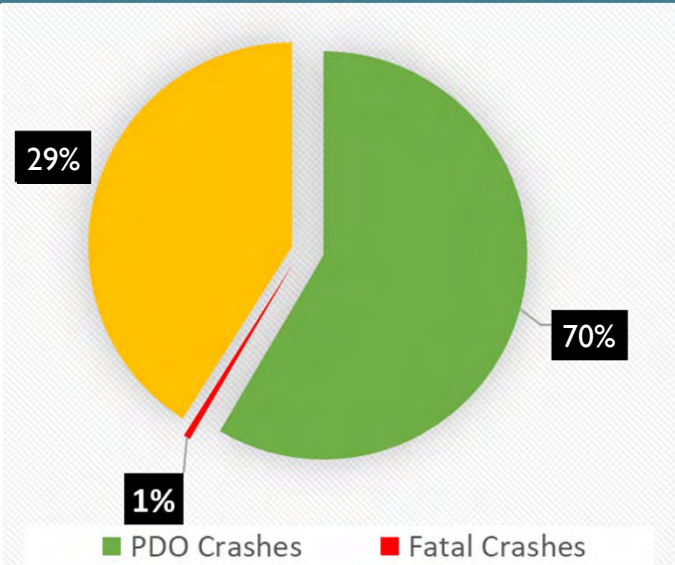
- Rear end with 1,206 crashes (50%).
- Sideswipe with 336 crashes (14%).
- Angle with 317 crashes (13%).



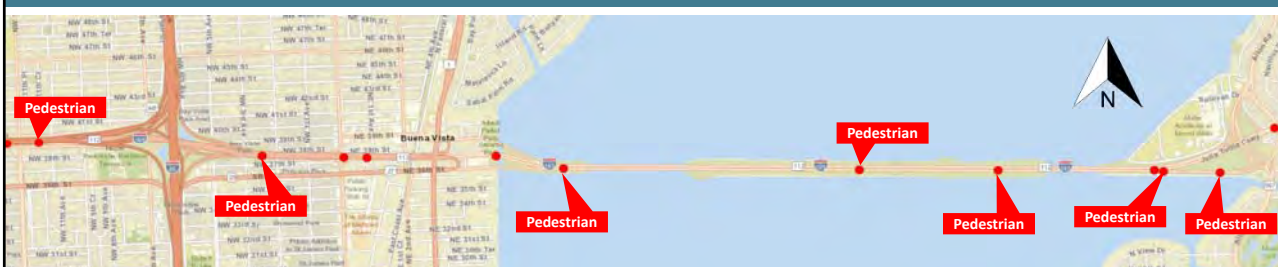
40

SAFETY ISSUES – CRASH SEVERITY

- 696 (29%) injury type crashes.
- 1684 (70%) Property Damage Only crashes (PDO) crashes.
- 15 fatal crashes (<1%).



SAFETY ISSUES – LOCATIONS OF FATAL CRASHES



- 15 Crashes
- Scattered throughout corridor
- 7 Involve pedestrians

SAFETY ISSUES – HIGH CRASH LOCATIONS



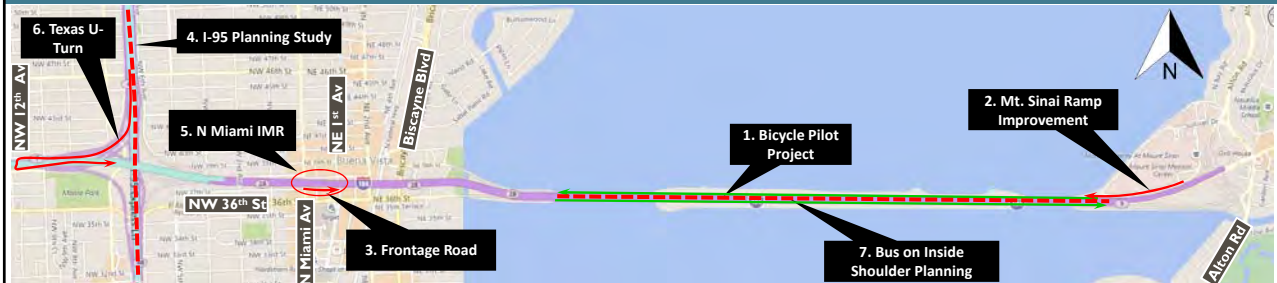
- Higher than statewide average for similar facility type



OTHER ACTIVITIES IN CORRIDOR



ON-GOING AND PLANNED ACTIVITIES AFFECTING CORRIDOR



- 1) Bicycles on Julia Tuttle Causeway Pilot Project
- 2) Alton Road to Westbound Julia Tuttle Causeway On-Ramp Improvement (Mt. Sinai) – Currently in Procurement for Design.
- 3) I-195 Frontage Rd & Ramp Realignment (Miami Design District) - \$6.3 M Construction Project Starting in FY 2018 – 2019.
- 4) I-95 Corridor Planning Study (FDOT / Kimley-Horn)
- 5) I-95 at N Miami Ave Interchange Modification Report (IMR) (Miami-Dade County/HNTB)
- 6) SB I-95 Express to EB I-195 Texas U-Turn Connection Concept Development (BCC Reviewing)
- 7) Bus on Shoulder Express Bus Service on Julia Tuttle Causeway Feasibility (BCC Reviewing)



STAKEHOLDER COORDINATION



STAKEHOLDER COORDINATION – BASED ON PUBLIC INVOLVEMENT PLAN



• Based on Public Involvement Plan

- Develop early and continuous public involvement
- Inclusive practices in activities and notification
- Consider needs of traditionally underserved
- Ensure effective stakeholder collaboration
- Identify convenient meeting times and locations
- Provide reasonable access to information
- Provide timely notice of public involvement activities
- Acknowledge and consider public comments



STAKEHOLDER COORDINATION



Biscayne Neighbors Association 2/28/18 Meeting

- 4 PAT Meetings, (3 More in addition to this one)
- Met with DACRA
- Met with Biscayne Neighbors Association
- Future Meetings:
 - Midtown CRA
 - Midtown CDD
 - Wynwood BID
 - Public Workshops (2)
 - City of Miami Commission
 - City of Miami Beach Commission
 - One on One Meetings with Elected Officials as Needed



NEXT STEPS

- **Complete Existing Conditions Report - September 2018**
- **Begin Concept Development – September 2018**
- **PAT Meeting #2 (No-Build / Tier 1) – November 2018**
- **Begin Environmental Screening / Conceptual Evaluation Prioritization - November 2018**
- **PAT Meeting #3 (Screening / Tier 2 Alts.) – March 2019**
- **Complete Concept Development – April 2019**
- **PAT Meeting #4 (Final Recommendations / Tier 2) – May 2019**
- **Study Completion – August 2019**



PROJECT CONTACT INFORMATION

FDOT PM

Ms. Shereen Yee Fong
Florida Department of Transportation,
District 6
Adam Leigh Cann Building
1000 NW 111th Avenue, Room 6111
Miami, Florida 33172
Phone: (305) 470-5393
E-mail: Shereen.YeeFong@dot.state.fl.us

FDOT Planning Manager

Mr. Ken Jeffries
Florida Department of Transportation,
District 6
Adam Leigh Cann Building
1000 NW 111th Avenue, Room 6111
Miami, Florida 33172
Phone: (305) 470-5445
E-mail: Ken.Jeffries@dot.state.fl.us

Consultant PM

Mr. Jose Muñoz, PE
BCC Engineering, Inc.
6401 SW 87th Avenue, Suite 200
Miami, FL 33173
Phone: (305) 670-2350
E-mail: jmunoz@bcceng.com

Consultant Deputy PM

Mr. Lorin Brissett, PE
BCC Engineering, Inc.
4901 NW 17th Way, Suite 506
Fort Lauderdale, FL 33309
Phone: (954) 928-1828
E-mail: Lbrissett@bcceng.com

Consultant Public Involvement Officer

Ms. Charesse Chester
Creativision MEDIA
633 NE 167th Street, Suite 600
Miami, FL 33162
Phone: (305) 944-7564
E-mail: cchester@creativisionmedia.com



QUESTIONS ?

